

MagicQ Mini Wing Installation

PLEASE NOTE: Users need to run MagicQ version v1.7.9.7 or higher to enable DMX Output.

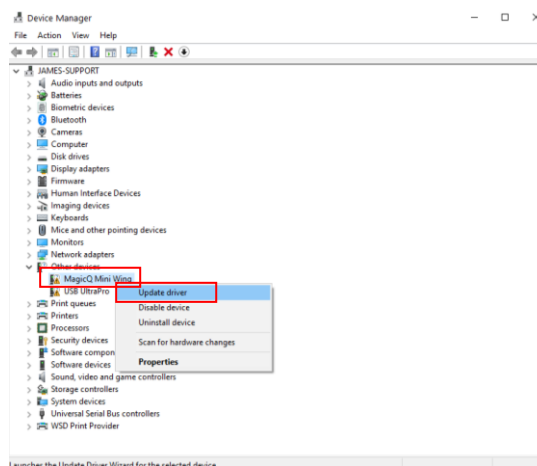
To use the MagicQ Mini Wing with a PC follow the instructions below. Exact sequence of events may vary according to version of Windows running on the PC.

- Download the latest version of MagicQ PC from the ChamSys website (www.chamsys.co.uk) and install it on your computer.
- Connect the MagicQ Mini Wing to a USB port on your computer - the blue LEDs should come on in turn and then flash. Some computers are not able to supply enough current required by the USB Specification to power the Mini Wing so an active (powered) USB hub may be required.
- Windows should detect the MagicQ Mini Wing and ask for drivers. Point it at the drivers folder under the MagicQ program directory, usually C:\Program Files\ChamSys Ltd\MagicQ PC\
- If Windows does not ask you for drivers but installs them itself then you may need to force it to install the correct drivers - see below.
- Start-up the MagicQ PC software. The blue flashing LEDs on the MagicQ Mini wing should stop flashing and the faders should have control.
- To output DMX from the MagicQ Mini Wing, configure Universes 1 in SETUP, VIEW DMX I/O to 'MQ Wing' and enable it (press ENTER to change options).

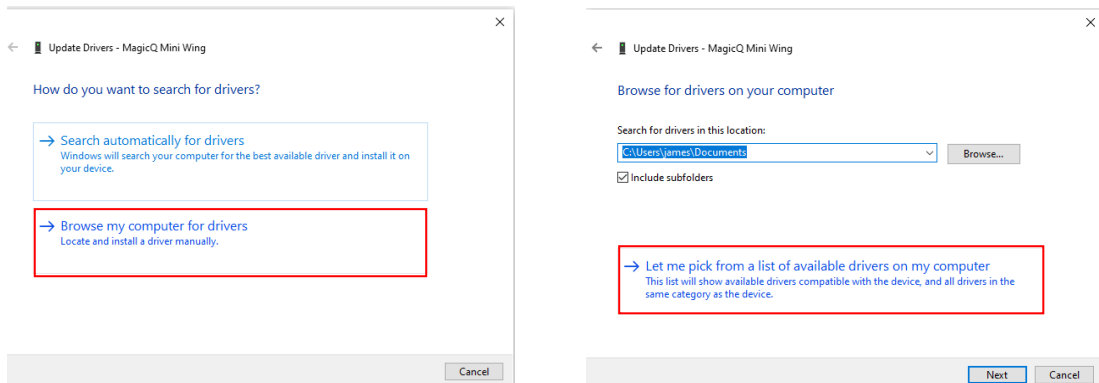
Installing the correct drivers

The MagicQ PC Mini Wing should normally be Plug & Play, if MagicQ does not recognise the wing then a manual update of the products drivers will be required as instructed below.

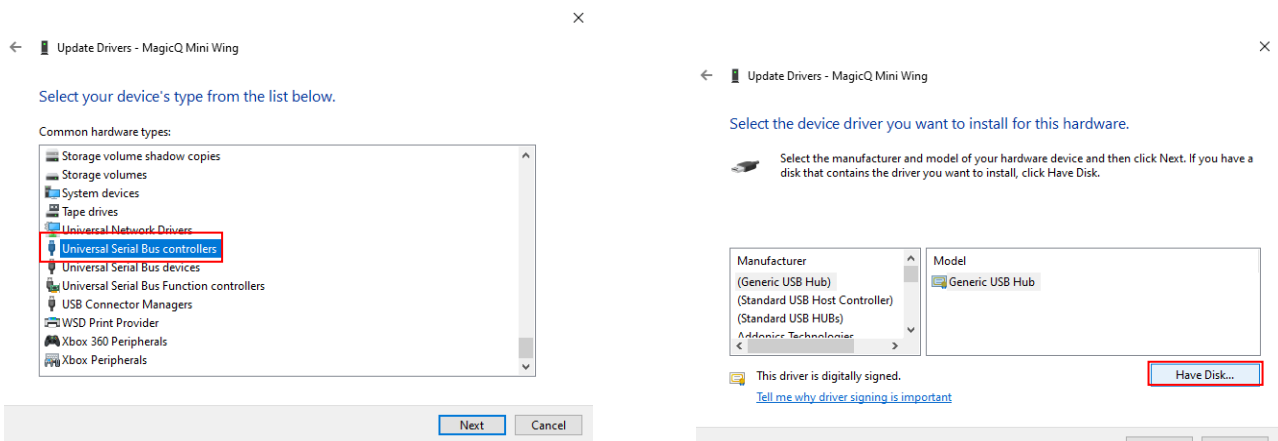
- Once connected, locate the computers device manager by either: searching for "Device Manager" within the start menu *or* navigating to Control Panel > Device Manager.
- The Mini Wing may be recognised under 'other devices' in the device manager window, Right click on the item and select "Update Driver Software". (See Image Below)



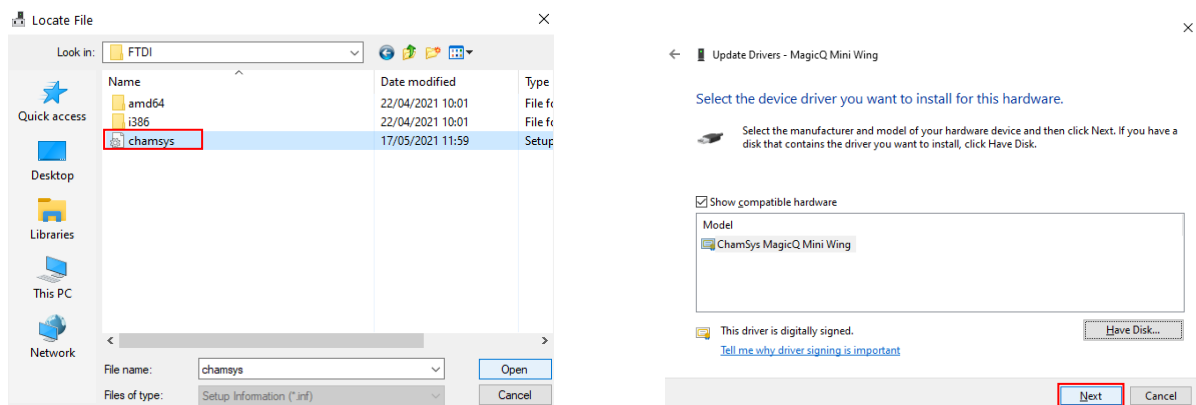
- Within the update, select “Browse my computer for driver software” and then select the second option “Let me pick from a list of available drivers on my computer” to manually locate the required hardware driver.



- Once selected if present with the 'select your device type from the list below box, select “Universal Serial Bus Controllers”, then select the “Have Disk...” button on the next screen.



- Point the dialogue box at the drivers folder under the MagicQ program directory, usually located within: *C:\Program Files\ChamSys Ltd\MagicQ PC\MagicQ Wing Drivers\FTDI* and select the chamsys file (chamsys.inf), the next screen should now display the 'ChamSys MagicQ Mini Wing', select Next to install this driver.



- Once installed, start up the MagicQ PC software.

- The blue flashing LEDs on the MagicQ Mini wing should stop flashing and the faders and encoders should have control.
- To output DMX from the MagicQ Mini wing, configure Universes 1 in SETUP, VIEW DMX I/O to 'MQ Wing' and enable them (press ENTER to change options).
- If your Wing does not connect to MagicQ, check that MagicQ Wings and Interface is enabled in MagicQ under: Setup > View Settings > Ports.

Installing on Mac OS

- Once connected, within MagicQ open the Setup window and navigate to: View Settings > Ports and set the parameter "MagicQ Wings and Interfaces" to "FTDI +VCP, auto DMX".

For further help see our full installation video:

<https://youtu.be/GjEEE3BZVsQ>