

## MagicQ PC & Extra Wing Compact Installation

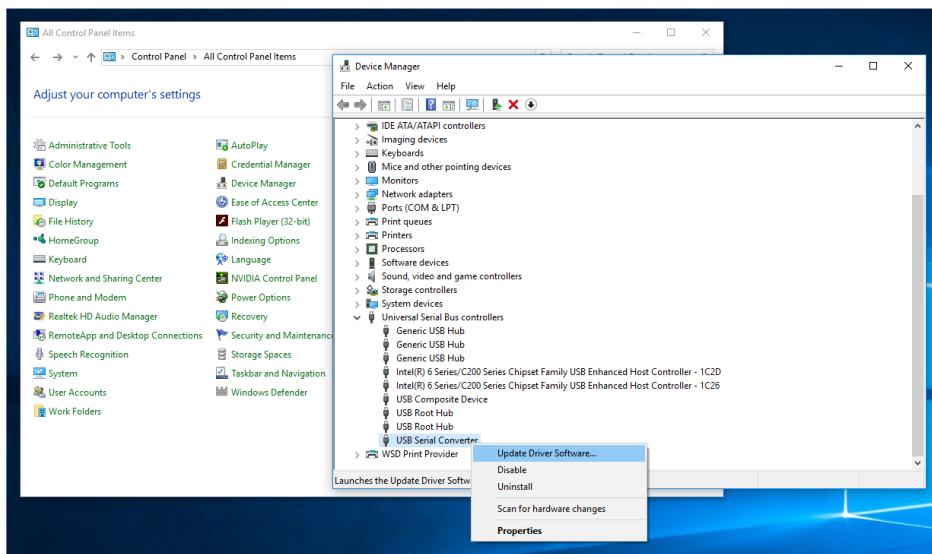
**Note:** The MagicQ PC & Extra Wings require that you be running v1.5.7.9 on Windows or v1.5.8.0 on Mac. It will not work with earlier software versions.

- Download the latest version of MagicQ from the ChamSys downloads site at <http://download.magicq.co.uk> and install it on your computer.
- Power up and connect the MagicQ PC or Extra Wing to the USB port on your PC or Mac - the blue LEDs should come on in turn and then flash.

### MagicQ Hardware Driver Installation (Windows)

The MagicQ PC & Extra Wings should normally be Plug & Play, if MagicQ does not recognise the wing then a manual update of the products drivers will be required as instructed below.

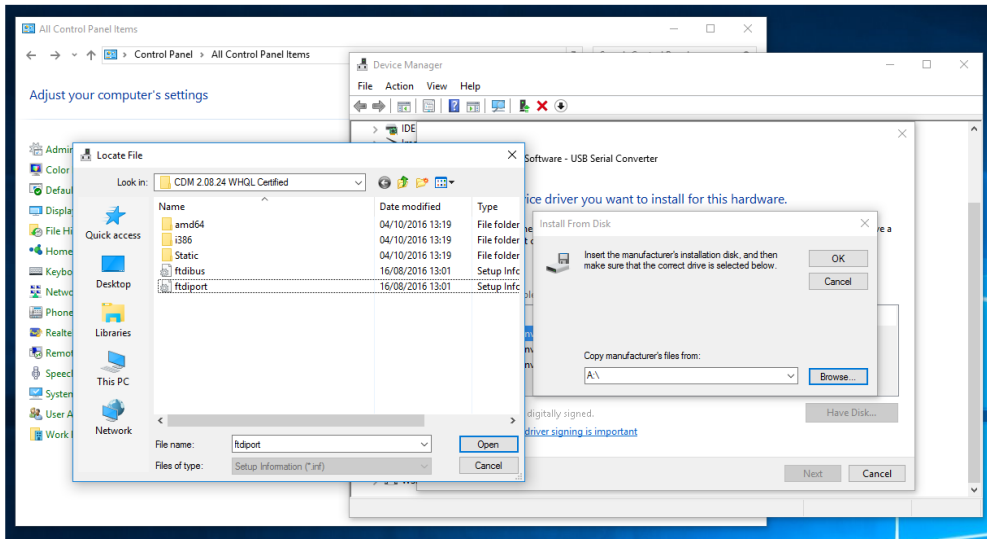
- Once connected, locate the computers device manager by either: searching for "Device Manager" within the start menu *or* navigating to Control Panel > Device Manager.
- The connected wing will be recognised as a "USB Serial Converter" Right click on the item and select "Update Driver Software". (See Image Below)



(Figure A: Device Selection Window)

- Within the new window, click "Browse my computer for driver software" and select the second option to manually locate the required hardware driver. Once selected click "Have Disk...".
- Point the dialogue box at the drivers folder under the MagicQ program directory, usually located within: *C:\Program Files\ChamSys Ltd\MagicQ PC\MagicQ Wing Drivers\PC Wing Compact* and select the appropriate driver. (See Below)

**MagicQ PC Wing: "ftdibus"**  
**MagicQ Extra Wing: "ftdiport"**



(Figure B: Driver Selection Window)

- Once installed, start up the MagicQ PC software.
- The blue flashing LEDs on the MagicQ PC wing should stop flashing and the faders and encoders should have control.

**Note:** for Extra/Playback/Execute Wings the wing needs to be configured in MagicQ first. (Setup > View System > View Wings)

- To output DMX from the MagicQ PC wing, configure Universes 1 and 2 in SETUP, VIEW DMX I/O to 'MQ Wing' and enable them (press ENTER to change options).
- If your Wing does not connect to MagicQ, check that MagicQ Wings and Interface is enabled in MagicQ under: Setup > View Settings > Ports.

### MagicQ Hardware Driver Installation (Mac)

- Once connected, within MagicQ open the Setup window and navigate to: View Settings > Ports and set the parameter "MagicQ Wings and Interfaces" to "FTDI +VCP, auto DMX".

**For further help see our full installation video:**  
[https://www.youtube.com/watch?v=E\\_6GVgfbkIY](https://www.youtube.com/watch?v=E_6GVgfbkIY)

### Installing on an ARM based system

- We do not currently recommend using an ARM based system, but if it is necessary then contact [support@chamsys.co.uk](mailto:support@chamsys.co.uk) for assistance.